

Please go to www.specotech.com/software-updates.html for the latest software

Thank you!

Product Components

NS Series

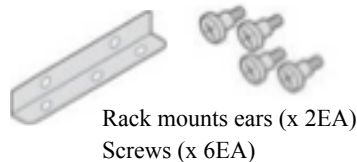


Remote Battery 1.5V (AAA x 2EA)



Mouse for N4NS, N8NS, N16NS

N4NSP, N8NSP, N16NSP



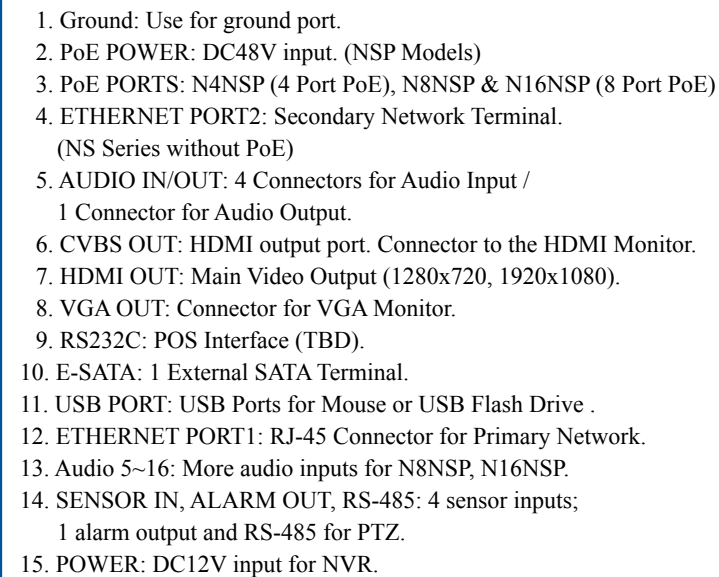
Rack mounts ears (x 2EA)
Screws (x 6EA)

Adaptors (DC12V 5A, DC48V 2A),
Power cables (110V or 220V) &
Audio cable (N8NSP, N16NSP)



- Please follow the proper power on procedures to avoid damaging the NVR.
- Connect all necessary components, e.g. monitor and cameras, before powering the NVR.
- Check the type of power source before connecting the power adaptor to the NVR. Only use the power supply that is included with the unit.
- It is recommended that the Adaptors are connected to the NVR before powering up unit.

N4NS, N8NS, N16NS



EZ Setup

- To start the EZ Setup, right click on the mouse and select EZ SETUP from the submenu.
- Enter username and password.
The default username is admin and password is 1111.
- It is strongly suggested to change the password to prevent unauthorized access.



Select EZ Setup

EZ Setup will help you to setup your DVR.

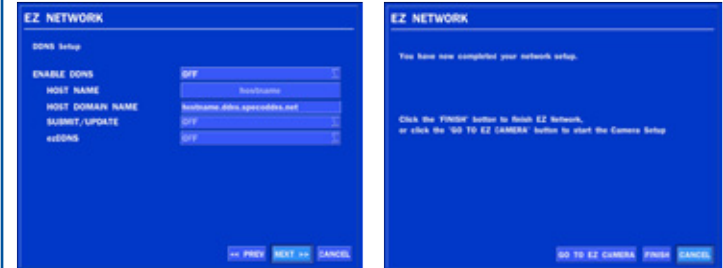
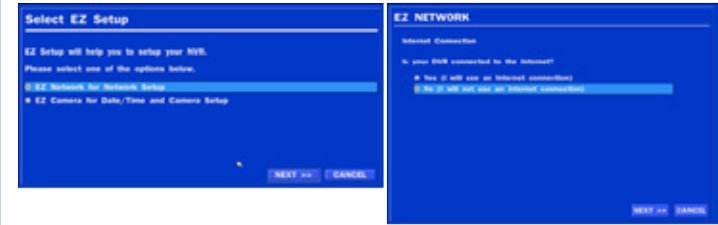
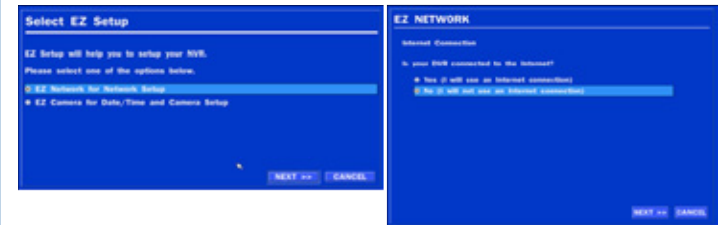
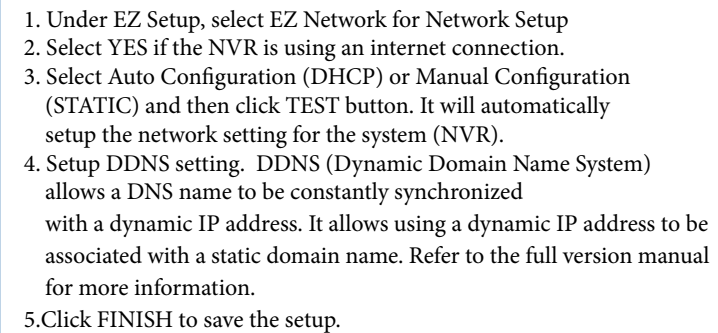
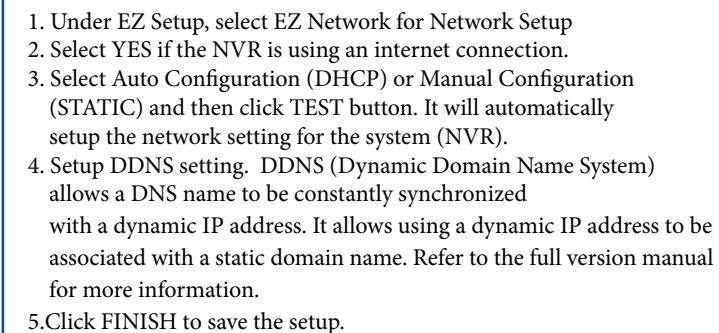
Please select one of the options below.

☒ EZ Network for Network Setup

☐ EZ Camera for Date/Time and Camera Setup

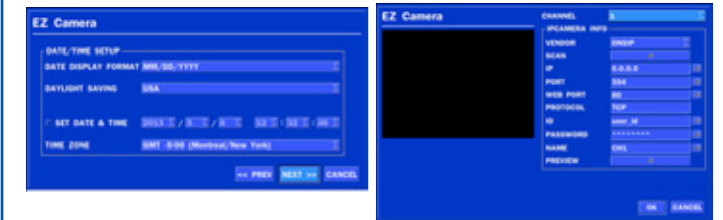
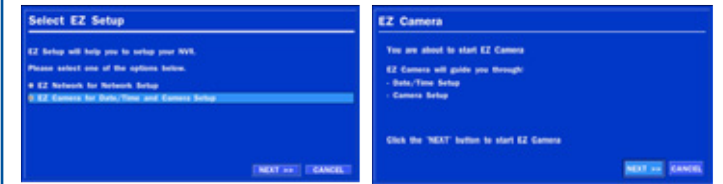
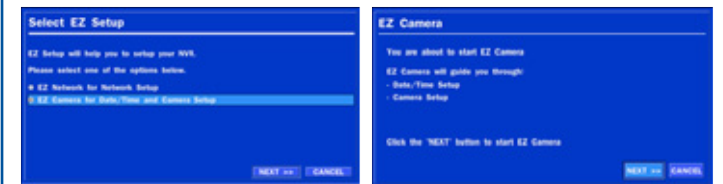
☐ EZ Camera for Date/Time and Camera Setup

NEXT **CANCEL**



1. Under EZ Setup, select EZ Network for Network Setup
2. Select NO if the NVR is not using an internet connection.
2. Select Auto Configuration Select (DHCP) or Manual Configuration (STATIC) and then click TEST button.
3. Select OFF for ENABLE DDNS and click NEXT button.
4. Click FINISH to save the setup.

EZ Camera



1. In the EZ Setup window, select EZ Camera for Date/Time and Camera Setup and click on NEXT.
2. The description about EZ Camera Setup procedure is then displayed.
3. Setup the DATE DISPLAY FORMAT, DAYLIGHT SAVINGS and DATE & TIME.
4. Click on NEXT to enter the EZ Camera Setup.
5. Select the IP Camera VENDOR
6. Click on SCAN to search the network for cameras.
7. Once the IP Camera information is added for the channel, click on PREVIEW to verify video
8. Click OK and EZ Camera Setup has completed.

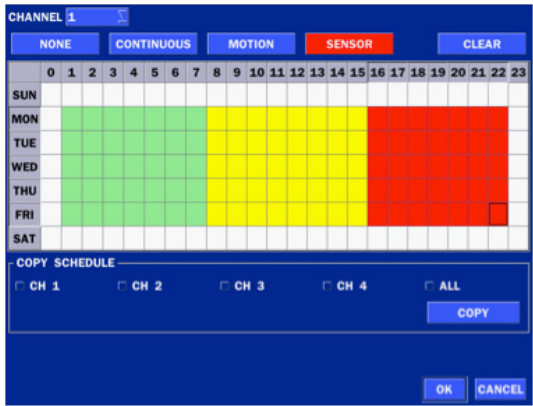
Quick Setup Guide

Speco Technologies NS Series NVRs

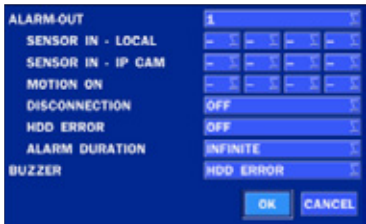
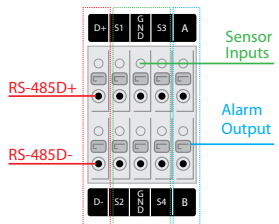


Recording Setup

- To setup a recording schedule, select SCHEDULE in the RECORD menu.
- Select CHANNEL > select NONE, CONTINUOUS, MOTION, or SENSOR > Highlight area for recording setting.
- To copy a schedule to a different channel, select the desired channel from the COPY SCHEDULE menu and click COPY.



Pin Definition of Alarm I/O & RS-485



Alarm I/O Setup

- In the SETUP menu, select the DEVICE tab and click on ALARM-OUT.
- Set the sensor, motion, and video loss for triggering alarm relay output.
- HDD Error and Video Loss can also trigger beeping.

Network Setup



Select the NETWORK tab.

- For DHCP, set the Network Type to DHCP and exit from the setup. The IP address, Subnet Mask, Gateway and DNS settings are retrieved from network servers. DHCP is dynamic and the settings will change from time to time.

- For Static, set the Network Type to Static. Enter the IP address, Subnet Mask, Gateway and DNS. Obtain this information from the network service provider.
- The Client Access must be ON for the NVR to be accessed remotely.
- To enable DDNS for free, Enter the NVR Name and DDNS server name.

IP Camera Setup



Select the IP Camera tab.

CHANNEL : Select the Channel to setup an IP Camera

VENDOR : Select the Brand of the Camera

SCAN : Automatically search the network for IP Cameras

IP : Enter the IP Address of the desired Camera

PORT : Enter the Camera stream Port Number (Default : 554)

WEB PORT : Enter the Camera Web Port Number (Default: 80)

PROTOCOL : Select a Protocol (Default: TCP)

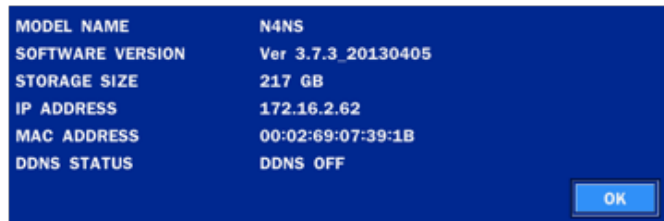
ID : Enter the User ID for access to the IP Camera

PASSWORD : Enter the Password for the associated ID

Connect the NVR via Web-Browser Viewer

Setup Instructions:

- Make sure PC is connected to the Internet.
- Make sure NVR is setup using the steps in Network Setup section.
- Start Internet Explorer; go to 'Tools' → 'Internet Options' → 'Security' tab.
- Select 'Trusted sites' and click 'Sites' to specify its security setting.
- Enter the IP address of the NVR in this in this zone.
- In the Security Level area, click 'Custom Level'. Under 'ActiveX controls and plug-ins', set all items to 'Enable' or 'Prompt'.
- Click 'OK' to accept the settings and close the 'Security Settings' screen. Obtain Network Information of the NVR.



- Obtain the local IP address from System Information from the Sub Menu. To get global IP address, contact network administrator or service provider.
- In the SETUP menu, select the SYSTEM tab and enable CLIENT ACCESS.
- In the SETUP menu, select the NETWORK tab, obtain the network and web port number.
- Start Internet Explorer and enter the IP address and web port of the NVR.- For example: http:// [ip address] : [web port] → http://172.16.2.62:80

Connect the NVR via Web-Browser Viewer continued

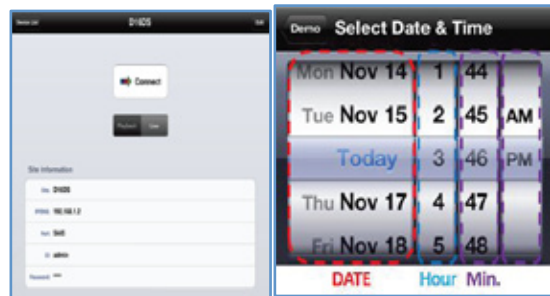
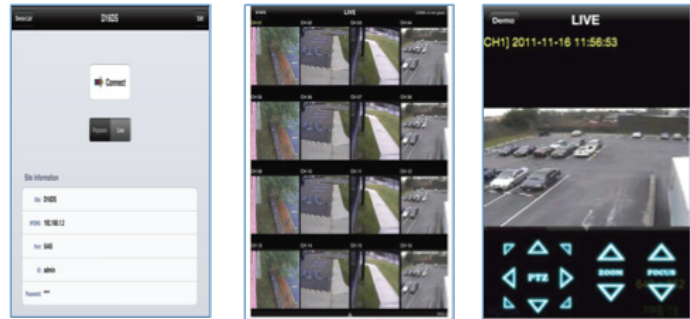
- The ActiveX controls and plug-ins dialog will be prompted for installation.
- Install the plug-ins.
- Click on 'Connect' and enter the username, password, and network port of the NVR.
- The default usernames/ passwords are admin / 1111 and user1 / 1111.
- The default network port is 5445.

Mobile View Software

The NS provides mobile surveillance software for both the iPhone and the Android™.

iPhone® / iPad®

- Search for 'Speco Player' in the Apple iTunes Store and install the app.



- Press (+) on the upper right and enter site information.
- Click SAVE to save the site information.
- Select the saved site from "Devices"
- Select a channel(s) to view.
- Select Playback/Live then click CONNECT

Android™

- Search for 'Speco Player' in the Google Play Store and install the app.

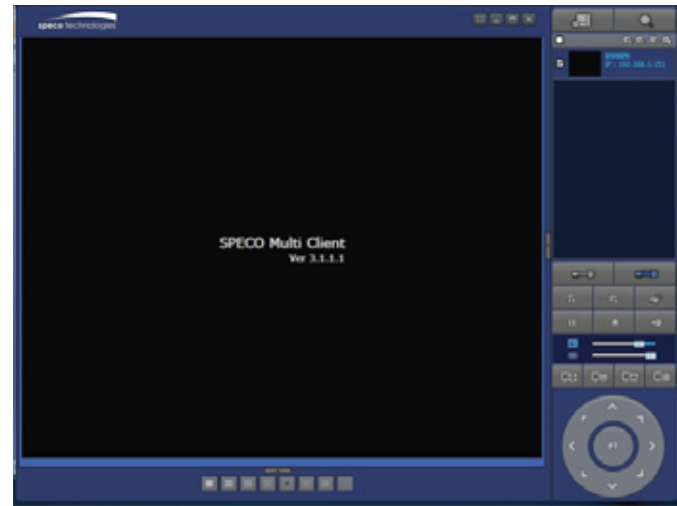


- Select the ADD menu and enter site information.
- Click ADD to save the site information.

Mobile View Software continued

- Select the saved site from "Devices" for network connection.
- Select a channel and select Live view or Playback.
- Click on START button.

Connect the NVR via SpecoTech Multi-Client Viewer Software



SpecoTech Multi-Client Viewer Software is a multiple site monitoring client software that allows streaming of video and audio, and transmission of alarm signals from the NVRs over the network. The SpecoTech Multi-Client can display up to 16 NVRs and supports dual monitors.

PTZ camera control is also supported by this software. By attaching a microphone and speaker system to devices on site, the user may make bi-directional audio communication over the network. Refer to the complete manual for more information.

The SpecoTech Multi-Client Viewer Software and manual are included on the CD.



200 New Highway
Amityville, NY 11701
1-800-645-5516

www.specotech.com

Speco Technologies is constantly developing and improving products. We reserve the right to modify product design and specifications without notice and without incurring any obligation. Rev. 5/21/13